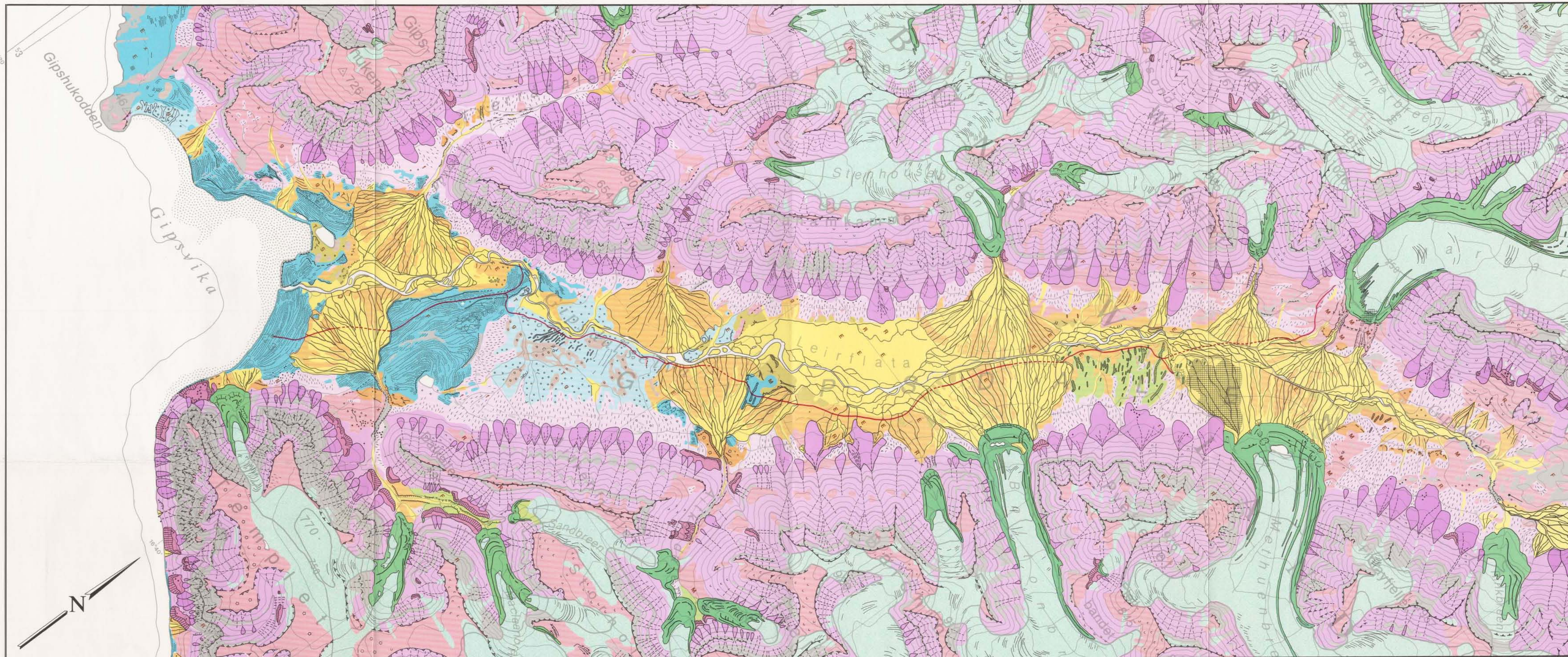


GIPSDALEN, Svalbard Quaternary Geology and Geomorphology

1:40,000



<p>M Till Morenemateriale</p> <p>G Glaciofluvial material Glasfluvial materiale</p> <p>F Fluvial material, pre-recent Fluvialt materiale, pre-resent</p> <p>R Fluvial material, recent Fluvialt materiale, recent</p> <p>S Marine beach material Marnt strandmateriale</p> <p>M Marine material, fine-grained Marint materiale, tinnornig</p> <p>E Eolian material Eolisk materiale</p> <p>F Weathering material Forvitningsmateriale</p>	<p>R Colluvium Rasmateriale</p> <p>G Gelifluction material Gelifluksjonsmateriale</p> <p>T Organic material Organisk materiale</p> <p>X Exposed bedrock Bert fjell</p> <p>Glacier / snow patch (1961) Bre / snofonn (1961)</p> <p>Iceing (1989) Iceing (1989)</p> <p>Glacial striae Skuringsstriper</p> <p>Terminal and medial moraine mainly ice-cored Rand- og midlmorene, vesentlig iskerne</p>	<p>De Geer moraines distinct, less distinct De Geer morener</p> <p>Canyon Canyon</p> <p>Meltwater channels Spyletjerner</p> <p>Washed surface Spylefott</p> <p>Gullies Ravner</p> <p>Channels on alluvial fans and river flats Renner på vifter og etvaelter</p> <p>Alluvial fan Vifte</p> <p>Eolian forms Eoliske former</p>	<p>Beach ridges Strandvoller</p> <p>Strandline Strandlinje</p> <p>Arête Egg</p> <p>Erosion scarps in bedrock large Erosjonskanter i fjell, store</p> <p>Erosion scarps in bedrock small Erosjonskanter i fjell, små</p> <p>Erosion scarps in sediments Erosjonskanter i løsmateriale</p> <p>Terrace edge Terrasekant</p> <p>Depression, thermokarst Forsenkning, termokarst</p>	<p>Tundra polygons Tundrapolygoner</p> <p>Earth hummocks Jordtuer</p> <p>Nonsorted polygons and circles Usorterte polygoner og sirkler</p> <p>Sorted polygons Sorterte polygoner</p> <p>Sorted circles Sorterte sirkler</p> <p>Stripes Striper</p> <p>Gelifluction lobes Gelifluksjonsvalker</p> <p>Rock glacier Stenbre</p>	<p>Avalanche tracks Skredleip</p> <p>Talus cones Raskjegler</p> <p>Debris slide, small Jordskred, lite</p> <p>Large boulders Store blokker</p> <p>Mounds and ridges Hauger og rygger</p> <p>Crevasses (1961) Bresprekker (1961)</p> <p>Vehicle track Kjørespor</p>
---	--	---	---	--	--

Reference:
 Referanse:
 Tolgensbakk, J. 1990: GIPSDALEN, Svalbard, Quaternary Geology and Geomorphology 1:40,000 Department of Physical Geography, University of Oslo

Fieldwork:
 Feltearbeid:
 K. Høgvard, L. Sørbel and J. Tolgensbakk 1988-1989

Reprography:
 Repografert:
 Department of Physical Geography University of Oslo

Printing:
 Trykking:
 Harald Lyche & Co. A.S. 3 - 1990

Commissioned by:
 Oppdragsgiver:
 Northern Resources Ltd.

Base map:
 Grunnleggskart:
 Topographic map of Svalbard 1:100,000, C8 Billefjorden enlarged to scale 1:40,000

