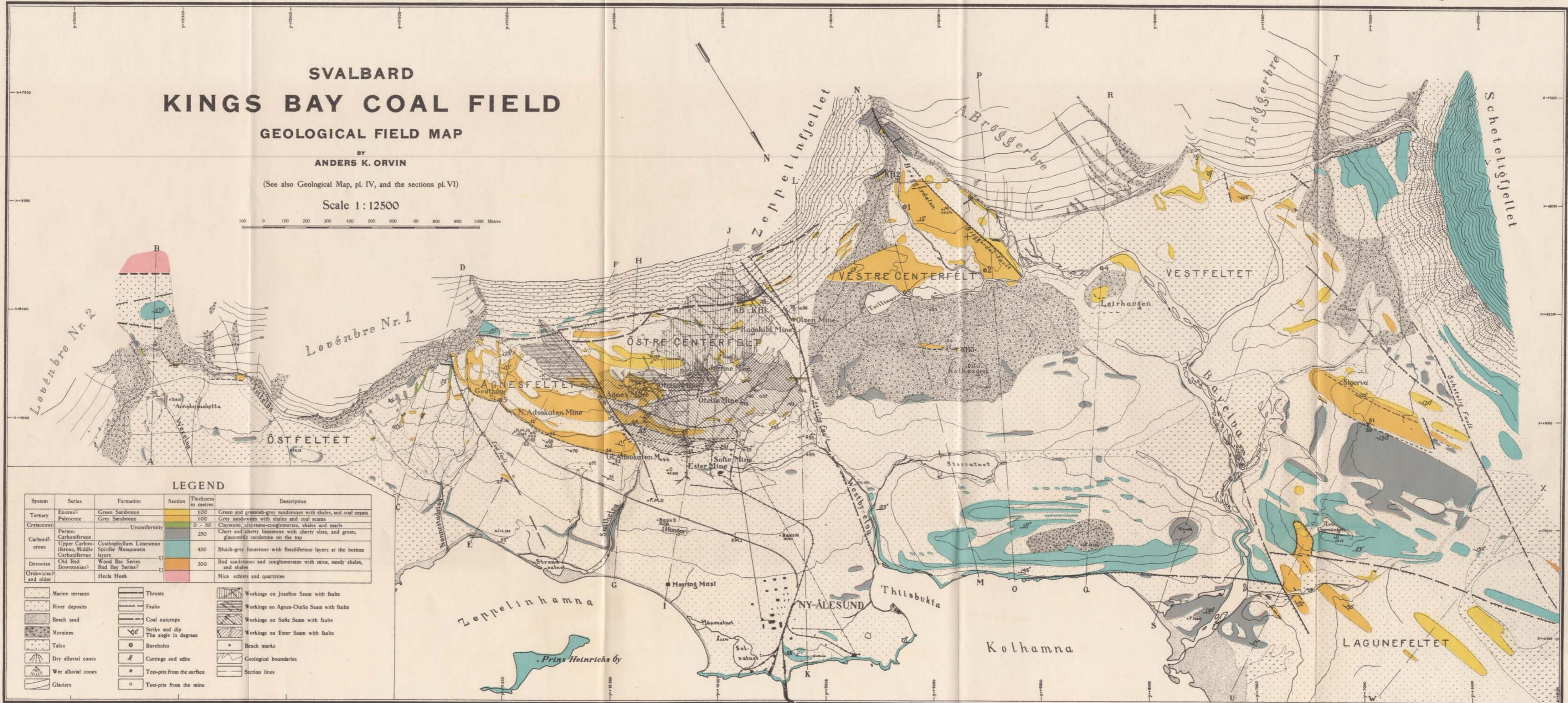
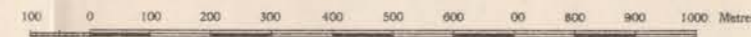


SVALBARD KINGS BAY COAL FIELD GEOLOGICAL FIELD MAP

BY
 ANDERS K. ORVIN

(See also Geological Map, pl. IV, and the sections pl. VI)

Scale 1:12500



LEGEND

System	Series	Formation	Section	Thickness in metres	Description
Tertiary	Eocene?	Green Sandstone	100	100	Green and greenish-grey sandstones with shales, and coal seams
	Paleocene	Grey Sandstone	150	150	Grey sandstones with shales and coal seams
Cretaceous		Unconformity	0 - 50	0 - 50	Claystone, claystone-conglomerate, shales and marls
			250	250	Chert and cherry limestone with cherty slate, and green, glauconitic sandstone on the top
Carboniferous	Permo-Carboniferous	Cyathophyllum Limestone	450	450	Bluish-grey limestone with fossiliferous layers at the bottom
		Spirifer Mosquensis layers			
Devonian	Old Red	Wood Bay Series	300	300	Red sandstones and conglomerates with mica, sandy shales, and shales
	Downonian?	Red Bay Series			
Ordovician? and older		Hecla Hoek			Mica schists and quartzites

Base from map on the scale of 1:1000 surveyed on the Norwegian Svalbard Expeditions 1921 by A. KOLLER and W. SOLHEIM.

Reproduced and printed by Ing. Dahls Opmåling, Oslo 1933